





Price: €1,395,000

4 Beds / 4 Baths

314m² Built | 249m² Terraces | 1,001m² Plot

Villa Calabria – Luxurious Detached Home in Bel-Air, Estepona

Discover Villa Calabria, a stunning property nestled in the sought-after Bel-Air neighborhood of Estepona. This elegant villa combines modern comfort with timeless design, offering the perfect retreat or relocation home for those seeking luxury living on the Costa del Sol.

Key Features

- Built Area: 304 m²
- Plot Size: 1,001 m²
- Bedrooms: 4 spacious rooms for comfort and privacy
- Bathrooms: 4 stylish and fully equipped
- Orientation: West-facing, bathing the villa in natural light throughout the day

Amenities

- Parking: Private garage included in the price
- Climate Control: Central heating and air conditioning for year-round comfort
- Outdoor Spaces: Large terrace, charming balcony, and a landscaped private

Garden

- Leisure: A private swimming pool perfect for relaxation or entertaining
- Storage: Built-in wardrobes and an additional storage room for convenience

Condition

The villa is second-hand but impeccably maintained, ensuring it's ready to move in without any renovations..

Why Villa Calabria?

Situated in the exclusive Bel-Air area of Estepona, this villa offers proximity to pristine beaches, world-class golf courses, and local amenities, making it ideal for both permanent living and vacation getaways. The combination of privacy, space, and luxury creates an unparalleled living experience.







 VILLA
CALABRIA

























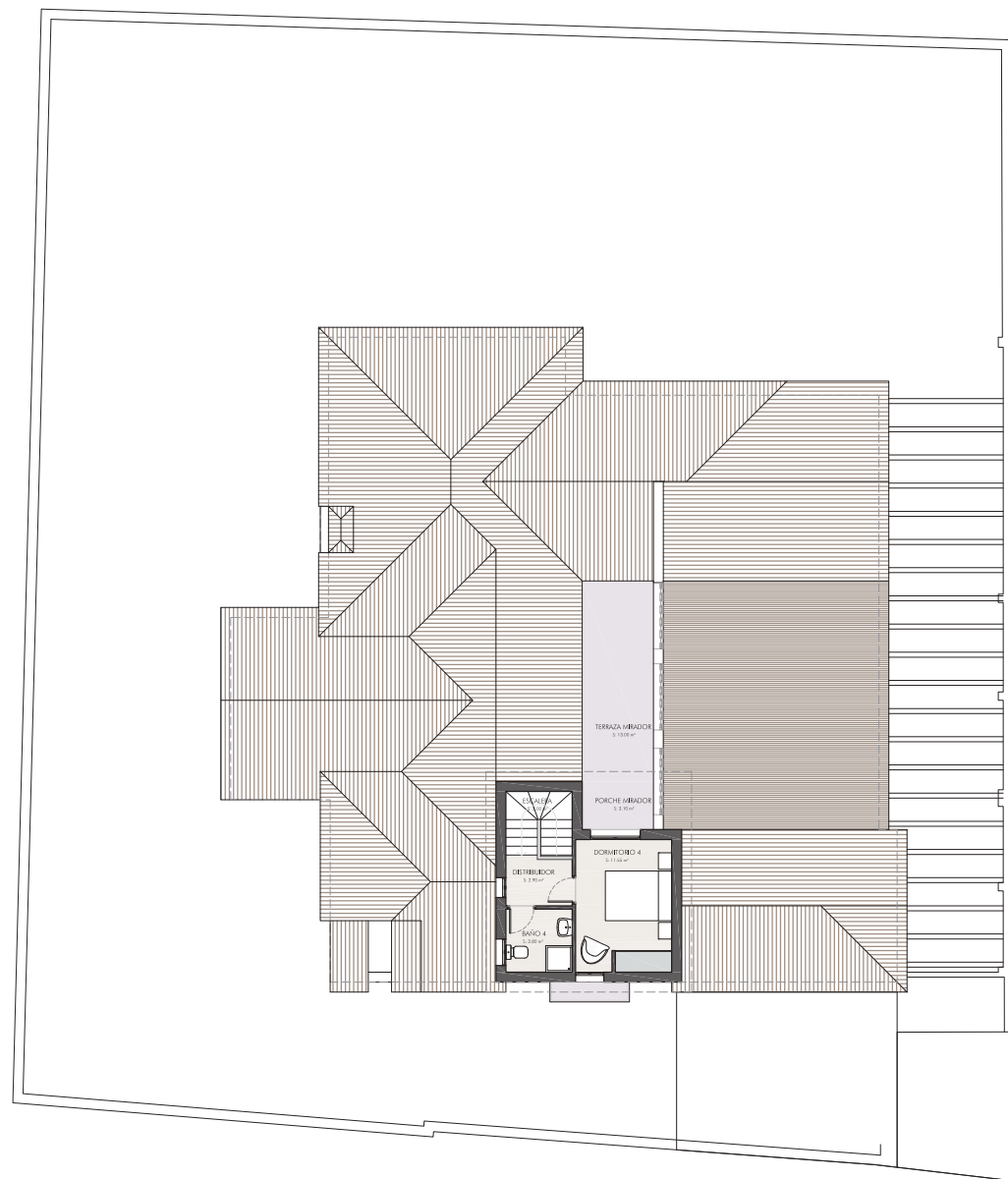



VILLA
CALABRIA



**VILLA
CALABRIA**

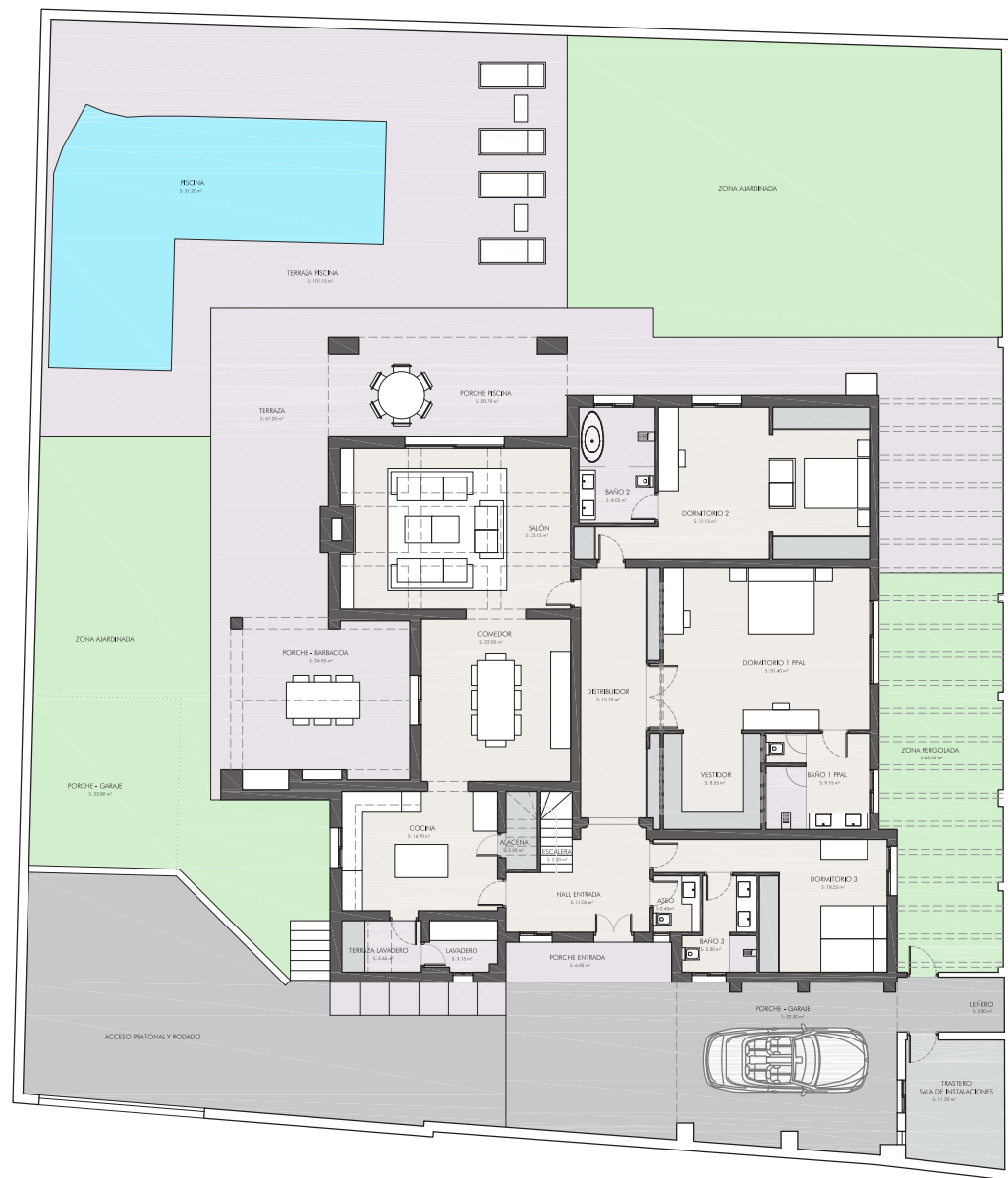




CUADRO DE SUPERFICIES VIVIENDA

PLANTAS	SUPERFICIE UTIL	SUPERFICIE CONSTRUIDA	TERRAZAS CUBIERTAS	PATIOS Y TERRAZAS DESCUBIERTAS
SALA INSTALACIONES	11,20 m ²	15,20 m ²	---	---
PLANTA BAJA	223,10 m ²	269,30 m ²	170,75 m ²	236,65 m ²
PLANTA PRIMERA	20,25 m ²	29,50 m ²	3,10 m ²	13,00 m ²
PLANTA DE CUBIERTA	---	---	---	---
TOTAL	254,55 m ²	314,00 m ²	173,85 m ²	249,65 m ²
PISCINA				51,20 m ²





CUADRO DE SUPERFICIES VIVIENDA

PLANTAS	SUPERFICIE UTIL	SUPERFICIE CONSTRUIDA	TERRAZAS CUBIERTAS	PATIOS Y TERRAZAS DESCUBIERTAS
SALA INSTALACIONES	11,20 m ²	15,20 m ²	---	---
PLANTA BAJA	223,10 m ²	269,30 m ²	170,75 m ²	236,65 m ²
PLANTA PRIMERA	20,25 m ²	29,50 m ²	3,10 m ²	13,00 m ²
PLANTA DE CUBIERTA	---	---	---	---
TOTAL	254,55 m ²	314,00 m ²	173,85 m ²	249,65 m ²

PISCINA 51,20 m²



